

## Shower Panel



### Specification Guide

- 14-gauge type 304 stainless steel
- Seamlessly welded
- Satin finished surfaces
- 6 anchoring locations
- Furnished with necessary fasteners for proper mounting

Part No. 100714

Fixture may be featured with available options.

Note: Optional wall sleeve or metal template is recommended for all installations for required wall openings.

### ► Description

I-CON shower panels are seamlessly welded 14-gauge type 304 stainless steel. Exposed surfaces have satin finishes. The fixture requires a wall opening and chase area for installation and maintenance.

### ► Recommended I-CON Intelligent Control System

The system includes low voltage, water-resistant controllers; waterproof stainless steel actuators; and direct-acting solenoid valves with no diaphragms. The I-CON pre-tempered water manifolds are industrial quality solenoid valves for use with up to four pre-tempered shower fixtures. They are designed to save water and money while allowing for an expandable valve solution: multiple valves can be attached in series to reduce inlet piping requirements. The manifold's solenoids are direct-acting and therefore do not have diaphragms, which are subject to deterioration or clogging.

### ► Accessories & Options

See accessories and available options on page 2.



# Shower Panel

Part No. 100714

- ▶ **Access Type (must select one)**
  - Rear
- ▶ **Shower Actuator Cutouts (must select one)**
  - TruTOUCH® Single Temperature
  - TruTOUCH® Dual Temperature
- ▶ **Toiletry Accessories (optional)**
  - Recessed Soap Dish

### Included with Fixture (must select one)

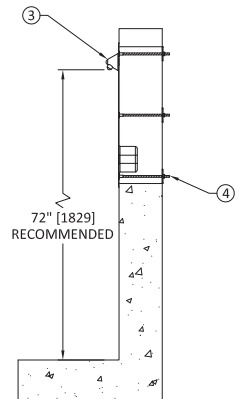
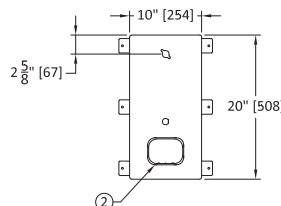
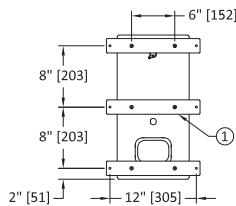
- ▶ **Wall Thickness (Standard Mounting Hardware)**
  - 0" to 10" (101595 : Standard)

### Our Experts Recommend (sold separately)

- ▶ **Showerhead**
  - 30° Fixed Showerhead Kit (100036 : 30° : SH K0.5)
  - 17.5° Fixed Showerhead Kit (100036 : 17.5° : SH K0.5)
- ▶ **Wall Sleeve & Wall Template**
  - Wall Sleeve (103637)  
*See Wall Sleeve Submittal to Order*
  - Wall Template (102853)  
*See Wall Template Submittal to Order*

Note: If any modification is required, please contact factory for availability.

1. MOUNTING PLATE
2. OPTIONAL RECESSED SOAP DISH
3. CHROME PLATED BRASS SHOWER HEAD (SOLD SEPARATELY)
4. 1/4" THREADED ANCHOR



**WARNING:** Cancer and Reproductive Harm - [www.P65Warnings.ca.gov](http://www.P65Warnings.ca.gov)  
**Important:** Installation instructions and rough-in are included with each fixture. Do not modify these drawings. Do not rough in with certified dimensions. Dimensions are subject to manufacturer's tolerance of plus or minus 1/4" and change without notice. I-CON assumes no responsibility for use of voided or superseded data.  
 © I-CON Systems

Approved for Manufacturing

Company \_\_\_\_\_ Quantity \_\_\_\_\_  
 Signature \_\_\_\_\_ Date \_\_\_\_\_