

ADA Shower Panel



Part No. 100718

Fixture may be featured with available options.

Specification Guide

- 14-gauge type 304 stainless steel seamlessly welded construction
- Satin finished surfaces
- Showerheads at 48" and 72" discharge height
- 8 anchoring locations
- Furnished with necessary fasteners for proper mounting

Note: Optional Wall Sleeve or Metal Template is recommended for all installations for required wall openings.

► Description

I-CON shower panels are fabricated using 14-gauge type 304 stainless steel seamlessly welded construction. Exposed surfaces are satin finished. Fixture requires wall opening and chase area for installation and maintenance. Fixture meets ADA requirement when properly installed per ADA guidelines.

► Recommended I-CON Intelligent Control System

The system includes low voltage, water-resistant controllers; waterproof stainless steel actuators; and direct-acting solenoid valves with no diaphragms. The I-CON pre-tempered water manifolds are industrial quality solenoid valves for use with up to four pre-tempered shower fixtures. They are designed to save water and money while allowing for an expandable valve solution: multiple valves can be attached in series to reduce inlet piping requirements. The manifold's solenoids are direct-acting and therefore do not have diaphragms, which are subject to deterioration or clogging.

► Accessories & Options

See accessories and available options on page 2.



ADA Shower Panel

Part No. 100718

- ▶ **Access Type (must select one)**
 - Rear
- ▶ **Shower Actuator Cutouts (must select one)**
 - TruTOUCH® Single Temperature
 - TruTOUCH® Dual Temperature
- ▶ **Lower Showerhead Cutout**
 - Cutout for I-CON Fixed Showerhead
 - Cutout for Shower Wand
- ▶ **Toiletry Accessories**
 - Recessed Soap Dish

Included with Fixture (must select one)

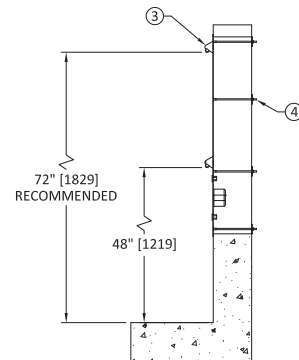
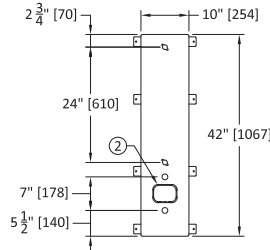
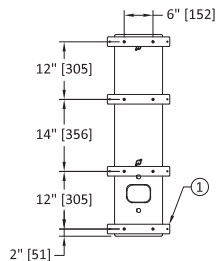
- ▶ **Wall Thickness (Standard Mounting Hardware)**
 - 0" to 10" (101595 : ADA)

Our Experts Recommend (sold separately)

- ▶ **Upper Showerhead**
 - 30° Fixed Showerhead Kit (100036 : 30° : SH K0.5)
 - 17.5° Fixed Showerhead Kit (100036 : 17.5° : SH K0.5)
- ▶ **Lower Showerhead**
 - 30° Fixed Showerhead Kit (100036 : 30° : SH K0.5)
 - 17.5° Fixed Showerhead Kit (100036 : 17.5° : SH K0.5)
 - Hand Wand Shower Kit (100485 : SW Kit)
- ▶ **Wall Sleeve & Wall Template**
 - Wall Sleeve (103643)
See Wall Sleeve Submittal to Order
 - Wall Template (102854)
See Wall Template Submittal to Order

Note: If any modification is required, please contact factory for availability.

1. MOUNTING PLATE
2. OPTIONAL RECESSED SOAP DISH
3. CHROME PLATED BRASS SHOWER HEAD (SOLD SEPARATELY)
4. 1/4" THREADED ANCHOR



WARNING: Cancer and Reproductive Harm - www.P65Warnings.ca.gov
Important: Installation instructions and rough-in are included with each fixture. Do not modify these drawings. Do not rough in with certified dimensions. Dimensions are subject to manufacturer's tolerance of plus or minus 1/4" and change without notice. I-CON assumes no responsibility for use of voided or superseded data.
 © I-CON Systems

Approved for Manufacturing

Company _____ Quantity _____
 Signature _____ Date _____