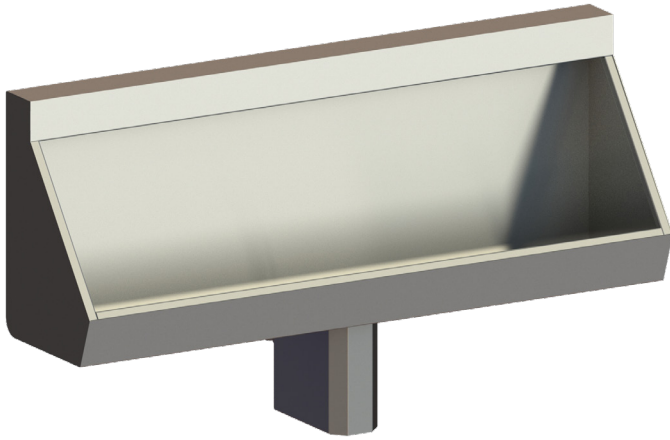


48" Trough Washdown Urinal



Specification Guide

- 14-gauge type 304 stainless steel
- Seamlessly welded
- Satin finished surfaces
- Washdown flushing action with self-draining, flushing rim
- Flush connection is 1-1/2" NPT male
- Removable, high volume, stainless steel, beehive strainer
- 1-1/2" NPT male fitting for removable waste
- Vandal-resistant, P-trap enclosure
- Anchoring locations vary based on length of urinal (minimum 4)
- Furnished with necessary fasteners for proper mounting

Part No. 101313

Fixture may be featured with available options.

Note: Optional wall sleeve or metal template is recommended for all installations with required wall openings.

► Description

I-CON urinals are seamlessly welded, 14-gauge type 304 stainless steel. Exposed surfaces have satin finishes. The fixture requires a wall opening and chase area for installation and maintenance. The urinal features a washdown flushing action with a self-draining flush rim. The fixture has a vandal-resistant, P-trap enclosure. Exposed fasteners are tamper-resistant stainless steel.

► Recommended I-CON Intelligent Control System

The system includes low voltage, water-resistant controllers; waterproof, stainless steel actuators; and direct-acting solenoid valves with no diaphragms. The ASSE-certified flush valves are proven to be more reliable and less expensive to maintain than traditional valves. The I-CON System can be configured as a standalone or communicating system, linked to our touchscreen PC technology. Both configurations offer the capability to stop flooding and abuse while managing toilet flushes per hour/per fixture, which reduces water usage and sewer costs.

► Accessories & Options

See accessories and available options on page 2.



48" Trough Washdown Urinal

Part No. 101313

- ▶ **Access Type (must select one)**
 - Rear
- ▶ **Supply Location (must select one)**
 - Wall Supply Top Supply
- ▶ **Urinal Waste (must select one)**
 - 1-1/2" NPT Male Fitting for Removable Waste
 - 2" OD SS P-Trap with 2" NPT Female Fitting
- ▶ **Additional Options**
 - 12 Gauge Cabinet

Included with Fixture (must select one)

- ▶ **Wall Thickness (Standard Mounting Hardware)**
 - 0" to 4" (101594 : 6" : 4 Bolts QTY2)
 - 4" to 8" (101594 : 10" : 4 Bolts QTY2)
 - 8" to 12" (101594 : 14" : 4 Bolts QTY2)

Our Experts Recommend (sold separately)

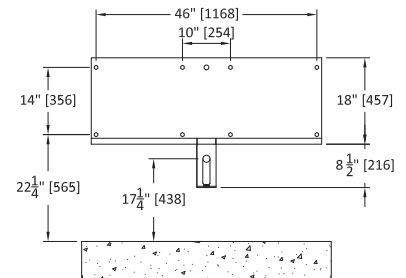
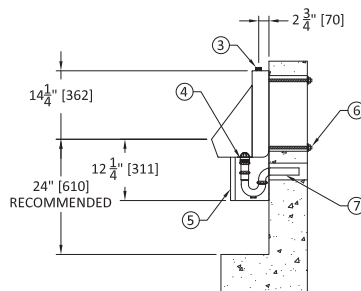
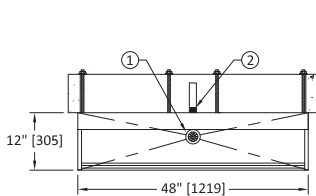
- ▶ **Removable Waste Options** (use w/1-1/2" NPT Male Fitting for Removable Waste Option ONLY)
 - P-Trap in Cabinet, Cast Brass w/ Plug, Removable (101592)
 - Thru-Wall Connection w/ P-Trap (101593)
 - Removable 90° Cast Brass Elbow (101907)
- ▶ **Wall Sleeve & Wall Template**
 - Wall Sleeve: QTY _____ Wall Thickness: _____
 - Wall Template: QTY _____

Note: If any modification is required, please contact factory for availability.

1. BEEHIVE TYPE URINAL STRAINER (REMOVABLE)
2. 1-1/2" NPT MALE WALL SUPPLY INLET

3. 1-1/2" NPT MALE TOP SUPPLY INLET
4. OPTIONAL 1-1/2" NPT MALE WASTE FITTING

5. TRAP COVER (REMOVABLE)
6. 1/2" THREADED ANCHOR
7. REMOVABLE P-TRAP (SOLD SEPARATELY)



WARNING: Cancer and Reproductive Harm - www.P65Warnings.ca.gov
Important: Installation instructions and rough-in are included with each fixture. Do not modify these drawings. Do not rough in with certified dimensions. Dimensions are subject to manufacturer's tolerance of plus or minus 1/4" and change without notice. I-CON assumes no responsibility for use of voided or superseded data.

Approved for Manufacturing

Company _____ Quantity _____
 Signature _____ Date _____