

Front Access Surface Mount Shower Panel



Specification Guide

- 14-gauge type 304 stainless steel
- Seamlessly welded
- Satin finished surfaces
- 6 anchoring locations
- Furnished with necessary fasteners for proper mounting

Part No. 101320 : AF

Fixture may be featured with available options.

► Description

I-CON shower panels are seamlessly welded 14-gauge type 304 stainless steel. Exposed surfaces have satin finishes. The fixture does not require a wall opening and chase area for installation and maintenance. Exposed fasteners are tamper-resistant stainless steel.

► Recommended I-CON Intelligent Control System

The system includes low voltage, water-resistant controllers; waterproof stainless steel actuators; and direct-acting solenoid valves with no diaphragms. The I-CON pre-tempered water manifolds are industrial quality solenoid valves for use with up to four pre-tempered shower fixtures. They are designed to save water and money while allowing for an expandable valve solution: multiple valves can be attached in series to reduce inlet piping requirements. The manifold's solenoids are direct-acting and therefore do not have diaphragms, which are subject to deterioration or clogging.

► Accessories & Options

See accessories and available options on page 2.



Front Access Surface Mount Shower Panel

Part No. 101320 : AF

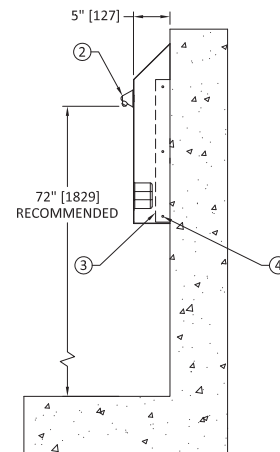
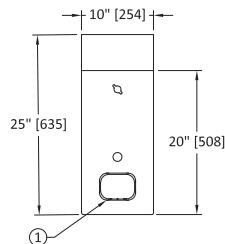
- ▶ **Access Type (must select one)**
 - Front
- ▶ **Shower Actuator Cutouts (must select one)**
 - TruTOUCH® Single Temperature
 - TruTOUCH® Dual Temperature
- ▶ **Toiletry Accessories (optional)**
 - Recessed Soap Dish

Our Experts Recommend (sold separately)

- ▶ **Showerhead**
 - 30° Fixed Showerhead Kit (100036 : 30° : SH K0.5)
 - 17.5° Fixed Showerhead Kit (100036 : 17.5° : SH K0.5)
- ▶ **Wall Sleeve & Wall Template**
 - Wall Template (104422)
See Wall Template Submittal to Order

Note: If any modification is required, please contact factory for availability.

1. OPTIONAL RECESSED SOAP DISH
2. CHROME PLATED BRASS SHOWER HEAD (SOLD SEPARATELY)
3. MOUNTING FRAME
4. 1/4-20 PINNED SECURITY TORX SCREW



WARNING: Cancer and Reproductive Harm - www.P65Warnings.ca.gov

Important: Installation instructions and rough-in are included with each fixture. Do not modify these drawings. Do not rough in with certified dimensions. Dimensions are subject to manufacturer's tolerance of plus or minus 1/4" and change without notice. I-CON assumes no responsibility for use of voided or superseded data.

© I-CON Systems

Approved for Manufacturing

Company _____ Quantity _____
Signature _____ Date _____