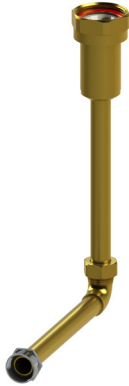
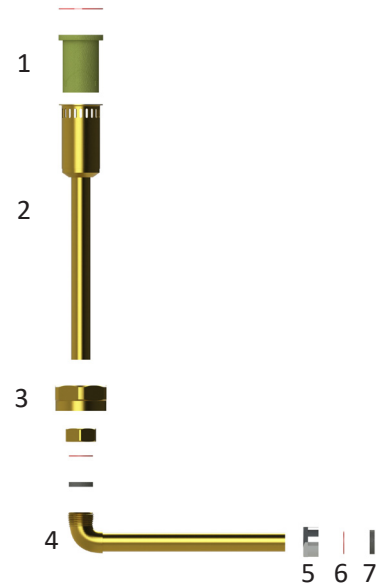


Concealed Flush Valve Connection for Penal Urinals; Concealed Rear Spud; 13.5" Rough In



Part No. 101857

Note: 13.5" Rough in with I-CON COBALT®, COBALT Pro®, & COBALT® Secure Series flush valve bodies.



► **Description**

Penal Flush Valve Connection Kit for
3/4" Concealed Rear Spud, 13.5" Rough in

Components

- (1) 103829**
High Pressure Silicone Vacuum Breaker Kit w/ Friction Washer
- (2) 100102 : 3/4" : 10" : Raw Brass : Flt Trans**
Vacuum Breaker Tube; 10"L; 3/4"; Raw Brass
- (3) 100107**
Vacuum Breaker Nut; 1-1/2"; Raw Brass
- (4) 101517 : 8" : Raw Brass**
Elbow with Tail Extension; 3/4"; 8" Tail; Raw Brass
- (5) 101482**
Spud Nut; 3/4"; Chrome-Plated Brass
- (6) 101518 : 3/4" : Nylon**
Slip Joint Friction Washer; 3/4"
- (7) 101519 : 3/4"**
Slip Joint Gasket; 3/4"; Rubber

Recommended Specification

I-CON Concealed Flush Valve Connection Kit 101857 is a raw brass connection kit for a concealed rear spud penal urinal with a 13.5" rough-in.

► **Accessories**

For additional accessories, see the Accessories Section of the I-CON catalog or contact our Customer Service Team for details.



 **WARNING:** Cancer and Reproductive Harm - www.P65Warnings.ca.gov

This space is for Architect/Engineer approval

The information contained in this document is subject to change without notice.