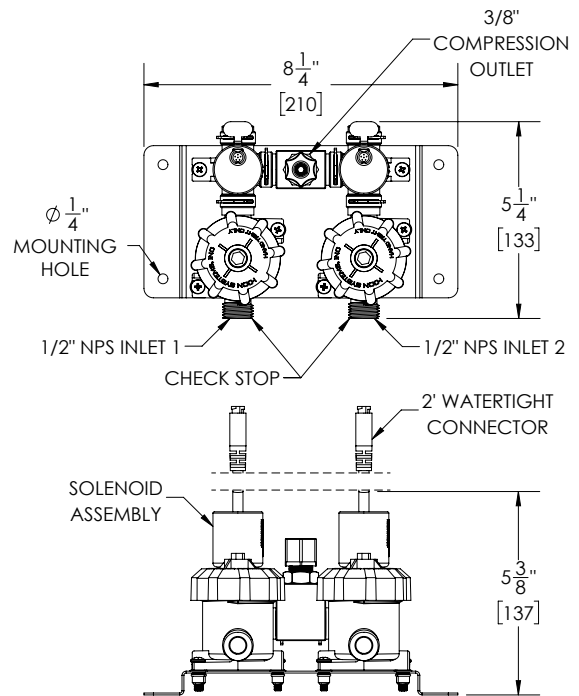


ELEMENT® Dual Temperature Manifold Valve for Single Shower



Part No. 104402

► Description

Shower manifold valve for use with hot and cold water. Supplies one showerhead. Includes pressure compensating 2.0 GPM flow regulator as standard.

► Features

- Standard pressure compensating 2.0 GPM flow regulator
- Check stop with retaining clips for added support and reliability
- No metering diaphragms to fail and clog
- Engineered non-metallic polymer valve body for advanced corrosion resistance
- Ability to activate using manual bypass handle
- All solenoids are interchangeable with other I-CON valves reducing spare parts
- Positive valve shut-off after pressure loss eliminating continual running of valve
- Maximum water temperature of 120° F & maximum pressure of 100 PSI
- 1/2" NPT supply connections and 3/8" OD tubing outlet

► Accessories

For additional accessories, see the Accessories Section of the I-CON catalog or contact our Customer Service Team for details.



► Options

- Solenoid Power (choose one)
 - 24 Volts AC (High Flow)
 - 9 Volts DC (Battery Operated)

Recommended Specification

ELEMENT® Dual Temperature Electronic Manifold Shower Valve is a sensor operated, dynamic sealing, shower valve with an engineered non-metallic polymer valve body for advanced corrosion resistance.

 **WARNING:** Cancer and Reproductive Harm - www.P65Warnings.ca.gov

This space is for Architect/Engineer approval

The information contained in this document is subject to change without notice.