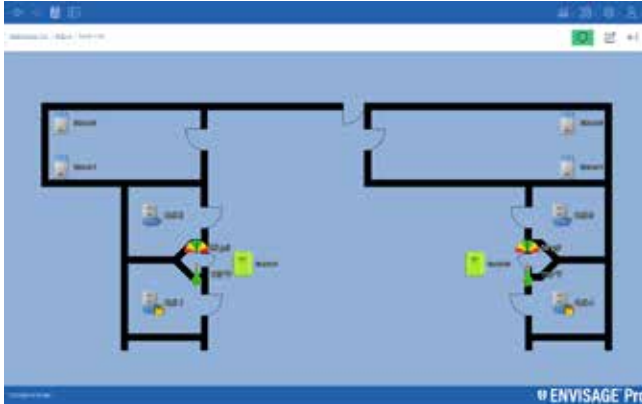


ENVISAGE® Pro Control System



Part No. 104524

► **Description**

I-CON ENVISAGE® Pro Network Management Console for facility water management. This system will be the center hub for all your NEXUS® Pro devices to connect. The easy-to-navigate software will allow you to adjust device settings, lockdown fixtures, review activities, and much more.

► **Options**

- **Software**
 - Software with map creation
- **Levels**
 - Software license only (includes map creation) Level 1
 - Software license only (includes map creation) Level 2
- **Building Management Systems Capable (BMS) (Per Server)**
 - BMS license *Requires Level 2
- **Number of Devices**
 - 1-50
 - 51-100
 - 101-200
 - 201-300
 - 301-500
 - 501-750
 - 751-1000

Our Experts Recommend (sold separately)

► **Hardware***

- Server only - 1 to 500 devices (**104525 : 500 Device : No**)
- Server only - 501 to 1000 devices (**104525 : 1K Device : No**)
- Server with touchscreen monitor - 1 to 500 devices (**104525 : 500 Device : Yes**)
- Server with touchscreen monitor - 501 to 1000 devices (**104525 : 1K Device : Yes**)

**With the purchase of a server you also will receive (1) NEXUS® Pro Bridge (104277)*

Recommended Specification

The I-CON ENVISAGE® Pro Water Management System must be able to run locally on a server. Multiple users shall be able to log in concurrently with hierarchical user levels. User activities must be tracked and logged for auditing. The devices shall be able to connect via wireless, wired, or a mixed network of wireless and wired. The system must be a non-polling communication protocol. Device activity must be logged and able to be viewed. Device settings must be able to be configured through the management system. The user interface must be a map view of the facility and display fixture and device statuses. Data analytics of device activity must be graphically displayed. All logs must be able to be exported.

ENVISAGE® Pro Control System

► **Features**

Level 1

- One user per user level
- Interactive map navigation
- Lockdown water
- Lockout abusive users
- Ability to adjust device settings
- Logs for device activity
- Ability to swap devices
- Activations over time only

Level 2 (includes all Level 1 features)

- Pressure and temperature monitoring
- Multiple users per user level
- Audit logs for user tracking
- Ability to add devices
- Ability to change port types
- Ability to add locations and edit maps
- Usability schedules
- Data analytics
- Ability to link port and adjust advanced settings

► **Accessories**

For additional accessories, see the Accessories Section of the I-CON catalog or contact our Customer Service Team for details.



WARNING: Cancer and Reproductive Harm - www.P65Warnings.ca.gov

This space is for Architect/Engineer approval

The information contained in this document is subject to change without notice.