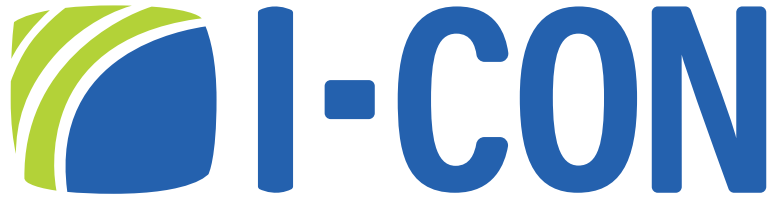


powered by
PROLAST®

featuring **TruFLUSH®**



Intelligent Water Conservation™



The COBALT Pro® Wall Sensor Concealed Flush Valve is designed for maximum performance and greater reliability than a diaphragm or piston valve.

101929 Series

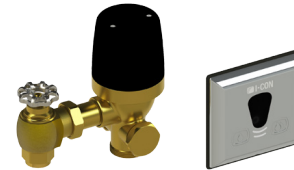
SIMPLE • POWERFUL • ACCURATE

Water Closets & Urinals



101929 : 3200


Wall Sensor Concealed Flush Valve for Urinals & Water Closets; Less Vacuum Breaker Assembly; Less Angle Stop



101929 : 3205

Wall Sensor Concealed Flush Valve for Urinals & Water Closets; Less Vacuum Breaker Assembly

powered by
ProLAST®



Flush Volume					
Water Closets	1.1gpf	1.28gpf	1.6gpf	2.4gpf	3.5gpf
Urinals	0.125gpf	0.25gpf	0.5gpf	1.0gpf	—

ProLAST® T-Seal Technology: Single piece unit, Industry's largest bypass, Seals at low PSI, Tamper proof GPF, No natural rubber components, Lasts up to 5x longer than industry standard.

featuring **TruFLUSH®**

Featuring TruFLUSH®: I-CON's built-in pressure transducer provides additional flushing accuracy by detecting variations in water pressure and making electronic adjustments as needed to flush at designated flush volume.

