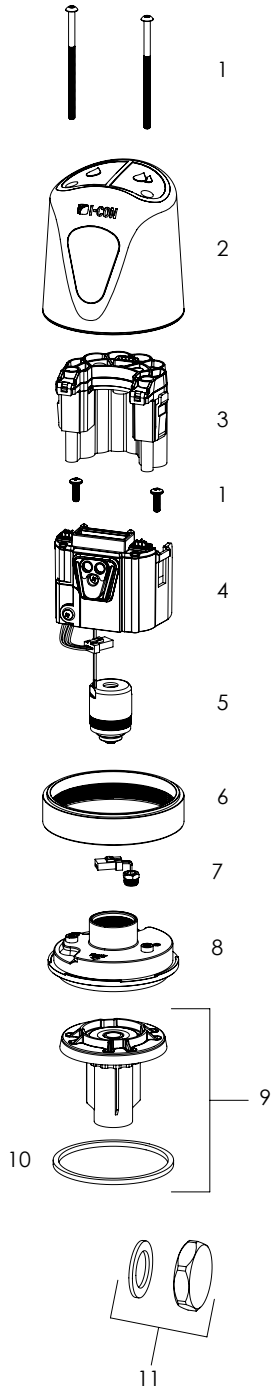


COBALT Pro® Exposed Sensor Flush Valve Retrofit Kit Exploded View

Part No. 101673



Label	Part Variant	Part Number	Description
1	-	102085	Hardware Kit
2	-	103960	Cover - External with Sensor Override Buttons
3	-	101691	Battery Module
4	A	101769	Control Module - COBALT Pro® CS3000 Series, Water Closet - 1.1 gpf / 4.2 Lpf
4	B	101770	Control Module - COBALT Pro® CS3000 Series, Water Closet - 1.28 gpf / 4.8 Lpf
4	C	101771	Control Module - COBALT Pro® CS3000 Series, Water Closet - 1.6 gpf / 6.0 Lpf
4	D	101772	Control Module - COBALT Pro® CS3000 Series, Water Closet - 2.4 gpf / 9.0 Lpf
4	E	TBD	Control Module - COBALT Pro® CS3000 Series, Water Closet - 3.5 gpf / 13.2 Lpf
4	F	101764	Control Module - COBALT Pro® CS3000 Series, Urinal - 0.125 gpf / 0.5 Lpf
4	G	101765	Control Module - COBALT Pro® CS3000 Series, Urinal - 0.25 gpf / 0.9 Lpf
4	H	101766	Control Module - COBALT Pro® CS3000 Series, Urinal - 0.5 gpf / 1.9 Lpf
4	I	101767	Control Module - COBALT Pro® CS3000 Series, Urinal - 1.0 gpf / 3.8 Lpf
5	-	101160	Solenoid
6	A	101623	Locking Ring - I-CON® / Sloan® Thread, Chrome-Plated Brass
6	B	101628	Locking Ring - I-CON® / Zurn® Thread, Chrome-Plated Brass
7	-	101642	Pressure and Temperature Sensor
8	-	101622	Cover - Internal
9	A	101686 : Wtr Closet	COBALT Pro® and COBALT Connect® Rebuild Kit, Water Closet
9	B	101686 : Urinal	COBALT Pro® and COBALT Connect® Rebuild Kit, Urinal
10	-	100999	Square-Profile O-Ring
11	-	101053	Actuator Opening Cover with Seal